



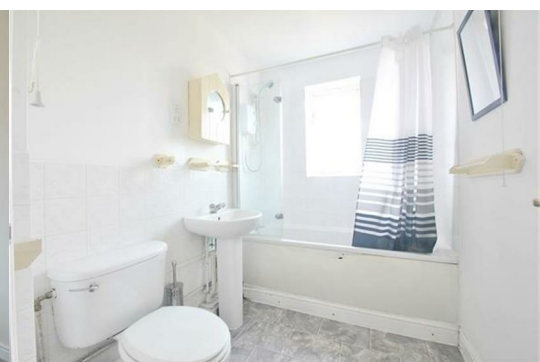
## 48 Dairyman Close

Cricklewood, London, NW2 1EP

£1,575 Per Calendar Month



One bedroom 2nd floor flat in this modern gated development in Cricklewood next to all local amenities. The property comprises of a large reception room, double bedroom, fully fitted kitchen and modern bathroom. Off street parking spaces and its offered furnished. good access to the A41, A1 and M1 and to central London. Available from 22nd August 2025 - Council tax band - D £30 month for water.

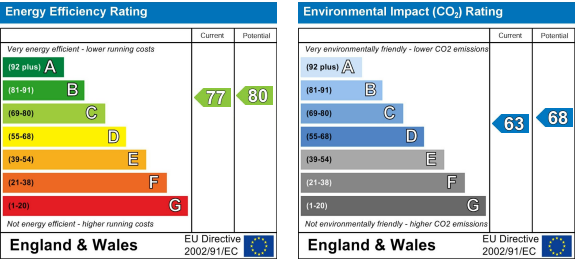




Area Map



Energy Efficiency Graph



These particulars, whilst believed to be accurate are set out as a general outline only for guidance and do not constitute any part of an offer or contract. Intending purchasers should not rely on them as statements of representation of fact, but must satisfy themselves by inspection or otherwise as to their accuracy. No person in this firms employment has the authority to make or give any representation or warranty in respect of the property.

